



# Kir4.1 rabbit pAb

<b>Catalog No</b>	YP-Ab-16535
<b>Isotype</b>	IgG
<b>Reactivity</b>	Human;Rat;Mouse
<b>Applications</b>	WB;IHC
<b>Gene Name</b>	KCNJ10
<b>Protein Name</b>	Kir4.1
<b>Immunogen</b>	Synthesized peptide derived from human Kir4.1 AA range: 160-240
<b>Specificity</b>	This antibody detects endogenous levels of Human,Rat,Mouse Kir4.1
<b>Formulation</b>	Liquid in PBS containing 50% glycerol, 0.5% BSA and 0.02% sodium azide.
<b>Source</b>	Polyclonal, Rabbit,IgG
<b>Purification</b>	The antibody was affinity-purified from rabbit serum by affinity-chromatography using specific immunogen.
<b>Dilution</b>	WB 1:500-2000;IHC-p 1:50-300
<b>Concentration</b>	1 mg/ml
<b>Purity</b>	≥90%
<b>Storage Stability</b>	-20°C/1 year
<b>Synonyms</b>	ATP-sensitive inward rectifier potassium channel 10 (ATP-dependent inwardly rectifying potassium channel Kir4.1;Inward rectifier K(+) channel Kir1.2;Potassium channel, inwardly rectifying subfamily J member 10)
<b>Observed Band</b>	
<b>Cell Pathway</b>	Membrane ; Multi-pass membrane protein. Basolateral cell membrane . In kidney distal convoluted tubules, located in the basolateral membrane where it colocalizes with KCNJ16. .
<b>Tissue Specificity</b>	Expressed in kidney (at protein level).
<b>Function</b>	function:May be responsible for potassium buffering action of glial cells in the brain. Inward rectifier potassium channels are characterized by a greater tendency to allow potassium to flow into the cell rather than out of it. Their voltage dependence is regulated by the concentration of extracellular potassium; as external potassium is raised, the voltage range of the channel opening shifts to more positive voltages. The inward rectification is mainly due to the blockage of outward current by internal magnesium. Can be blocked by extracellular barium and cesium.,similarity:Belongs to the inward rectifier-type potassium channel family.,subunit:Seems to form heterodimer with Kir5.1/KCNJ16. Interacts with INADL.,
<b>Background</b>	This gene encodes a member of the inward rectifier-type potassium channel family, characterized by having a greater tendency to allow potassium to flow into,



rather than out of, a cell. The encoded protein may form a heterodimer with another potassium channel protein and may be responsible for the potassium buffering action of glial cells in the brain. Mutations in this gene have been associated with seizure susceptibility of common idiopathic generalized epilepsy syndromes. [provided by RefSeq, Jul 2008],

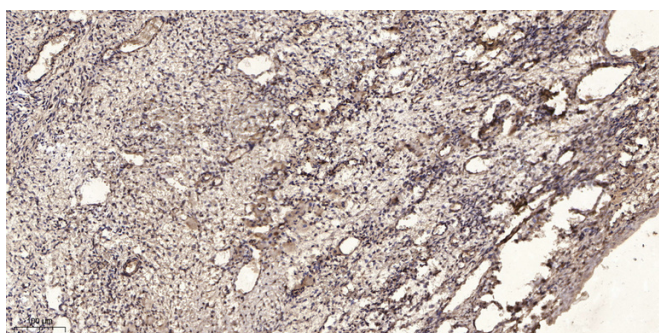
**matters needing attention**

Avoid repeated freezing and thawing!

**Usage suggestions**

This product can be used in immunological reaction related experiments. For more information, please consult technical personnel.

## Products Images



Immunohistochemical analysis of paraffin-embedded human oophoroma. 1, Antibody was diluted at 1:200(4° overnight). 2, Tris-EDTA,pH9.0 was used for antigen retrieval. 3,Secondary antibody was diluted at 1:200(room temperature, 45min).